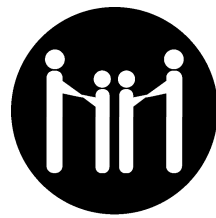


Annual Report 2007

July 1, 2006 to June 30, 2007

Table of Contents

2007 Board of Directors	2
Letter to Our Friends	2
Professional Staff	2
Fiscal Statement	3
Agency Highlights	4
Residential Treatment	5
Foster Care	6
Adoption Services	7
Case Management	8
Therapeutic Child Support	9
Supervised Visitation/ Monitored Exchange	10
Effective Co-Parenting Classes	10
Volunteer Contributions	11
Donor Honor Roll	12
Kraut Route 2006	15
46th Annual Golf Classic	15
Opportunities to Give	16



Holly Hill

children's services

Healing, Help and Hope Since 1884

Since 1884, Holly Hill Children's Services has provided healing, help and hope for Northern Kentucky's most vulnerable children. Holly Hill was chartered April 3, 1884 through a special act of the Kentucky General Assembly. Founded as the Campbell County Protestant Orphan's Home, the original facility was located in Newport, Kentucky and housed children whose parents had died or were too ill to care for them.

By the 1950's, medical advances reduced the number of true orphans, and the focus of the Home changed to meet the needs of children experiencing broken homes and desertion.

By the 1970's, Holly Hill began to work with children with emotional, behavioral, school and family problems. And in 1987, Holly Hill was officially licensed as a "treatment oriented" program offering specialized care and an expanded continuum of services.

Thanks to a generous donation of land from Eric Robinson, the agency moved its primary location to California, KY in 1990. A second location was later opened in Wilder, KY to house the community-based programs.

Over the last 123 years, much has changed in the community we serve; the number of children that need help, the severity of their problems, and the com-



plexity of the treatment required. And Holly Hill has changed accordingly; evolving from a traditional orphanage into a multi-faceted dynamic social service agency offering six programs from two locations.

Holly Hill is licensed as a child caring and child placing facility by the Kentucky Cabinet for Health and Family Services and is nationally accredited by the Council on Accreditation.



Holly Hill Children's Home
California, Kentucky

Our Vision

Holly Hill Children's Services embraces a changing service environment, meeting the present needs of children in our community and preparing to meet the needs of the children we have yet to serve.

Board of Directors

- William Rachford, Chair**
Sherrill Morgan & Associates
- John Wenderfer, Vice-Chair**
St. Elizabeth Medical Center
- Michael Farris, Treasurer**
Deloitte Tax LLP
- Jan Kreutzer, Secretary**
Attorney
- Bonnie Pickett, Member-at-Large**
Interpreter for the Deaf

- Laurie Dowell**
Attorney
- Walter Dunlevy**
Builders FirstSource, Inc.
- Philip Foster**
Fifth Third Bank
- Bill Hagedorn**
Retired, Citizen's Bank of Northern KY
- Kevin Hanson**
Cardinal Engineering Group
- Rodney Henson**
Divisons, Inc.
- Joe Ivey**
Kroger
- Joseph Jennings**
Retired, Cincinnati Gas & Electric
- Melissa Lutz**
Champlin Haupt Architects
- Cathy Meyer**
M & M Service, Inc.
- Gary Mitchell**
Divisions, Inc.
- Charlene Moeller**
Fifth Third Bank
- Brian Pangburn**
Morgan Stanley
- Carol Purser**
Retired, Delta Airlines
- John Russell**
Lakeside Christian Church
- William Voelker**
School Administrator
- Roger VonStrohe**
Retired, Newport School Administrator

Letter to our Friends

It is with pride and gratitude that we present the 2007 Annual Report of Holly Hill Children's Services. This report provides detailed information about agency performance, program service outcomes, and the very real difference Holly Hill has made in the lives of the children served between July 1, 2006 and June 30, 2007.

Holly Hill is a dynamic agency that provides a comprehensive array of services offering healing, help and hope to the children of Northern Kentucky. While we have been committed to strengthening the lives of abused, abandoned and neglected children for over 123 years, we have not done so alone. We rely upon and are grateful for the leadership, collaboration, and support of the community.

We are grateful to the community members who provide ethical governance and visionary leadership to Holly Hill Children's Services through their volunteer service on the Board of Directors. Their diverse expertise and personal commitment to the positive stewardship of Holly Hill's mission and resources is to be recognized and commended.

We are also grateful to the Commonwealth of Kentucky for their

confidence in and support of the services we provide to the children we serve, demonstrated through their approval of the first major reimbursement rate increase we've seen in years. We are also grateful to the other state and county-based agencies that provide a collaborative referral network as well as therapeutic and financial support.

And, we are grateful to the many individual and corporate members of the community who have so generously provided volunteer and financial support to Holly Hill. Even with the increase in reimbursement rates, there is still a large gap between the funding received and the expenses required to fund the services provided. It is only through the financial benevolence of our donors that Holly Hill is able to continue providing the best-practice level of professional, therapeutic intervention to the children and families we serve.

We are proud of the many accomplishments achieved over the past year, but also conscious of the additional challenges we face and the work that remains to be done. The number of children that need help continues to increase as does the severity of their problems and the complexity of the treatment re-



Bill Rachford
Board Chairman

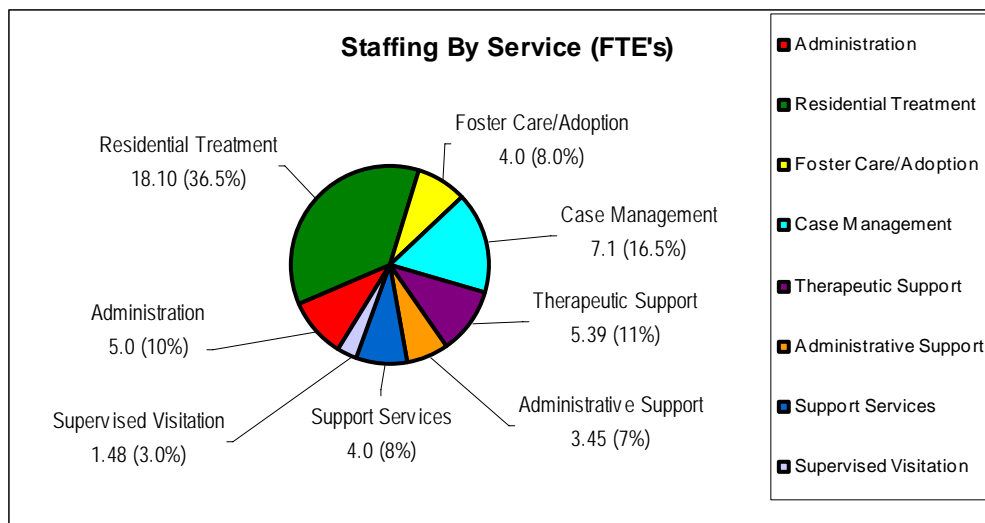


Connie Wong
Executive Director

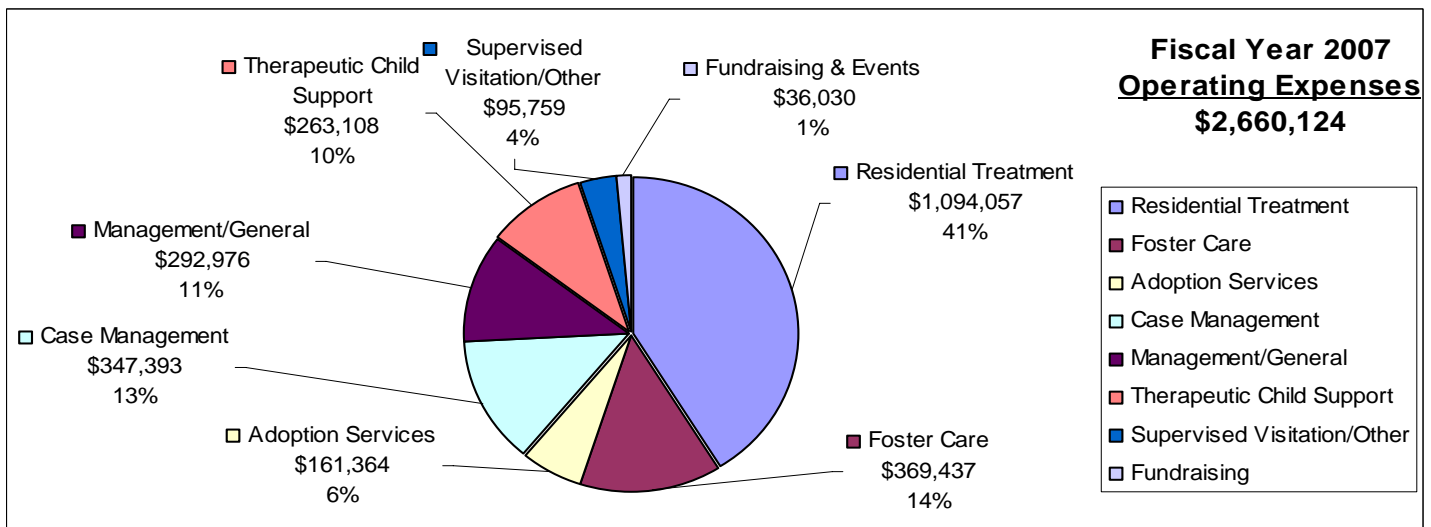
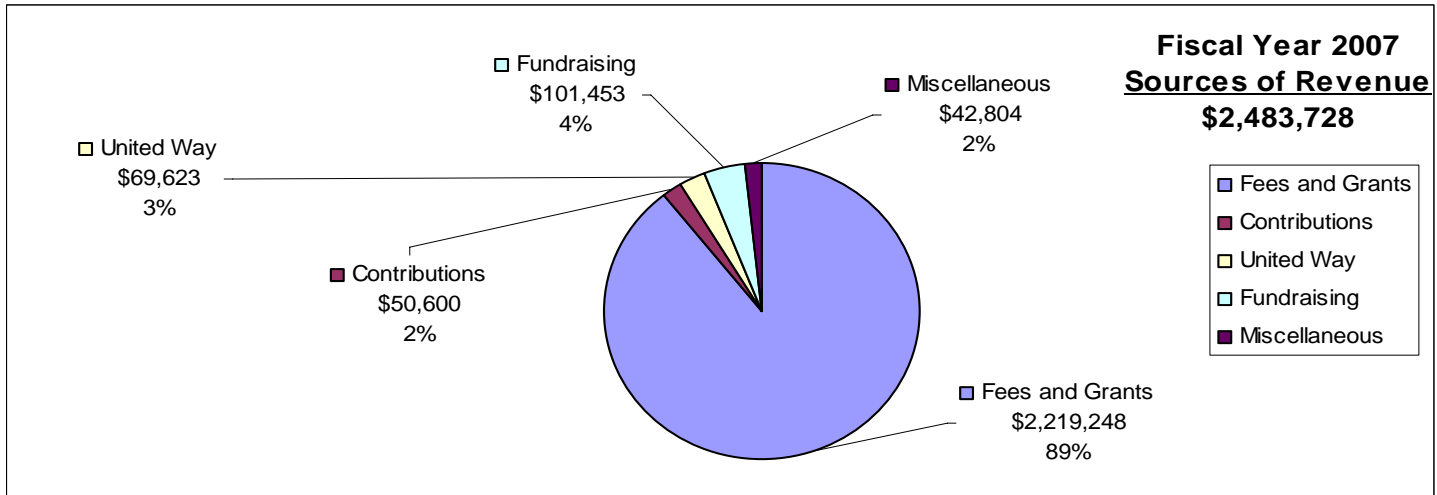
quired. However, the leadership and staff of Holly Hill is prepared and committed to ensuring that the necessary financial and professional resources are available to meet these challenges.

It is our sincere desire that the information contained in this report not only reinforces the critical need filled by Holly Hill, but serve to illuminate the importance of your support now and in the future.

Professional Staff



Fiscal Statement



2007 Fiscal Year Statement of Activity

July 1, 2006 to June 30, 2007

Operating Revenues

Fees and Grants	\$2,219,248	89%
Contributions	\$50,600	2%
United Way	\$69,623	3%
Fundraising	\$101,453	4%
Miscellaneous	\$42,804	2%
Total:	\$2,483,728	100%

Operating Expenses

Residential Treatment	\$1,094,057	41%
Foster Care	\$369,437	14%
Adoption Services	\$161,364	6%
Case Management	\$347,393	13%
Management/General	\$292,976	11%
Therapeutic Child Support	\$263,108	10%
Supervised Visitation/Other	\$95,759	4%
Fundraising	\$36,030	1%
Total:	\$2,660,124	100%



Holly Hill was recognized as an outstanding provider of high quality services when it received national accreditation in 2004. The Council on Accreditation, an independent accrediting body for social and behavioral health care services, promotes best-practice standards for providers of children, youth, and family services. Holly Hill's accreditation is effective through September 30, 2008.

Agency Highlights

Program	Children	Adults	Total	Percentage
Residential Treatment	38	44	82	9%
Therapeutic Foster Care	33	21	54	6%
Adoption Services	7	n/a	7	1%
Case Management	202	299	501	57%
Therapeutic Child Support	65	n/a	65	7%
Supervised Visitation/Other	63	86	149	17%
Co-Parenting Classes	n/a	23	23	3%
Fiscal Year 2007 Total:	408	473	881	100%

Our Mission

Holly Hill Children's Services strengthens the lives of children through its programs and services focused on the child.

Holly Hill Children's Services

Serves clients in Kentucky, focusing on the twelve-county region of Northern Kentucky

- Boone
- Bourbon
- Campbell
- Carróll
- Gallatin
- Grant
- Harrison
- Kenton
- Nicholas
- Owen
- Pendleton
- Scott

2007 Performance Indicators

- The total number of children and families served by Holly Hill in FY '07 increased 32% over FY '06, due in large part to the growth of the Case Management Program.
- During this fiscal year, there was a 10% increase in the number of cases clinically reviewed as a result of increases in clients served in various programs, with 334 total cases reviewed for clinical soundness. There was marked improvement in all programs in decreasing clinical deficiencies, with a 46% decrease in identified deficiencies from the previous year.
- There was a 7% increase in the number of cases reviewed for documentation thoroughness, with a 10% decrease in identified deficiencies reported compared to the previous year.
- Support Services staff received two perfect scores of 100% on the semi-annual Northern Kentucky Independent District Health Department inspection.
- The number of agency-wide critical incidents in FY '07 decreased 11% and the number of physical interventions decreased 39% as compared with the respective numbers in FY '06.
- Community financial support of Holly Hill increased 31% in FY '07.

Affiliations



Residential Treatment

The Residential Treatment Program provides a safe, structured residential treatment setting for adolescent girls (age 11-17) who are not able to function at home or other out of home care settings (i.e. foster care). Holly Hill's Residential Program is the only agency serving adolescent girls and offering the level of intensive services in Northern Kentucky. Our services enable children to remain in Northern Kentucky where they can continue to have contact and be involved in treatment with their families. This contact is vital to improving family relationships while in treatment thereby increasing the chances for successful return to home and positive outcomes. The treatment staff works intensely with parents and other caregivers to resolve the issues that brought the child into the program and either return them home or to a less restrictive placement in the community. The program accepts referrals from the Department of Community Based Services, Psychiatric Hospitals, Impact Plus and other treatment resources. The average length of treatment stay is six to nine months.



Jennifer had languished at a psychiatric hospital for over three months due to an inability to locate an appropriate placement for her at time of discharge.

She had multiple special needs and had been denied by other programs due to those needs. The hospital contacted Holly Hill Residential Treatment Program directly and requested she be considered for placement as they felt the program could adequately meet her needs.

Jennifer entered the program and struggled initially with the transition and managing her anxiety responses at Holly Hill and school.

Special accommodations were made educationally and in treatment to assist her in reducing such responses.

Jennifer began to slowly make progress and after several months began to thrive in the program and school.

After one year in the treatment she has transitioned back to regular school and is preparing to enter a foster home.

Jennifer continues to make great progress and has learned many skills thought impossible in the past.

Demographic Information

Age Range of Children Served:

10 - 14: 18

15 - 19: 20

Number of Children Served: 38

Number of Families Served:

Number of Foster Families: 6

Number of Adoptive Families: 4

Number of Adults Served:

Number of Individual Parents Served: 40

Other Custodians: 4

Children Served by Gender:

Female: 38

Children Served by Race/Ethnic Composition:

Black, African-American: 1

Pacific Islander: 1

White (non-Hispanic/Latino): 31

Bi-Racial: 5

Children Served by Religious Affiliation:

Catholic: 4

Protestant: 33

Mormon: 1

Children Served by County:

Boone: 4

Campbell: 5

Carroll: 1

Gallatin: 2

Grant: 3

Kenton: 17

Owen: 1

Pendleton: 1

Fayette: 1

Garrard: 1

Madison: 1

Pulaski: 1

Children Served by Placement Source:

Foster Home: 6

Home of Natural Parent(s): 4

Home of Relative(s): 1

Hospitals: 19

Other Residential Program: 4

Shelters: 2

Detention Center: 2

Children Served by Referral Source:

DCBS – Kentucky Department for Community Based Services: 21

Impact Plus via NorthKey Community Care: 10

Impact Plus via Other Regional and Local Hospitals: 3

Common Diagnosis of Children Served:

Adjustment Disorder

Attention Deficit Disorder

Attention Deficit Hyperactivity Disorder

Bi-Polar Disorder

Depression:

Disruptive Disorder

Mental Retardation (Mild, Moderate, or Severe)

Oppositional Defiant Disorder

Personality Disorders

Post Traumatic Stress Disorder

Reactive Attachment Disorder

Tourette's Disorder

Program Highlights

The Residential Treatment program had an increase in the number of clients entering the program from psychiatric hospitals from the previous year. Fifty percent of all clients entering in the fiscal 2007 year entered from psychiatric hospitals versus only 25 percent during the 2006 fiscal year. The increase is related, in part, to the increase in Impact Plus funded clients who must enter directly from a psychiatric hospital. The Impact Plus clients discharged during the fiscal year were successfully discharged and return to their family home.

Outcomes

- 80% of residents who completed four months or more of treatment were discharged to a less restrictive placement. Most returned home to their family and those unable to return home were placed in a foster home. (Goal was 75%)
- 96% of residents attended school daily contributing to educational success. (Goal was 80%)



Josh came to Holly Hill Children's Services Foster Care in 2003. He had already been in two foster homes since his parents had their parental rights terminated.

This was a difficult time for Josh and he openly expressed the fear that he would never find a forever family. But, that was not so.

He is now being adopted by his current foster parents and couldn't be happier. He will not only have two biological sisters but an adoptive sister and an adoptive sibling on the way.

Facts About Children in Foster Care

There are approximately 7,000 children from the ages of birth to 21 who are living in out of home care in Kentucky.

- 51% are age 12 and older
- Most have siblings who need care
- All races and many ethnic groups are represented
- Most have suffered some type of abuse and/or neglect by their birth family
- Their needs may include medical problems, physical disabilities, developmental delays, or behavioral and emotional disabilities
- Many infants who come into care have experienced prenatal exposure to drugs or alcohol.
- 75% are able to return home when their birth families or relatives can provide appropriate care for them
- Many utilize programs that assist them in obtaining education and job skill training after high school graduation

Foster Care

Holly Hill Children's Services Foster Care utilizes a team approach in offering children and families a diverse array of intensive services and supports with one unifying goal-to help achieve a safe, permanent home. The Foster Care program offers an intensive level of services and supports designed to promote permanency, stabilize placements, and reduce length of time in out-of-home care.

The Foster Care offices are located at the Holly Hill Children's Home in California, Kentucky. However, our foster families are located throughout the Northern Kentucky area and services are provided primarily in the home.

Demographic Information

Age Range of Children Served:

Under 5: 7
5 - 9: 11
10 - 14: 10
15 - 19: 5

Number of Children Served: 33

Number of Families Served:

Number of Foster Families: 21

Children Served by Gender:

Female: 18
Male: 15

Children Served by Race/Ethnic Composition:

Black, African-American: 1
White (non-Hispanic/Latino): 26
Bi-Racial: 6

Children Served by Religious Affiliation:

Protestant: 33

Children Served by County:

Campbell: 10
Fleming: 1
Fayette: 1
Kenton: 19
Pendleton: 2

Children Served by Placement Source:

Foster Home: 5
Home of Natural Parent(s): 21
Hospitals: 1
Other Residential Program: 6

Children Served by Referral Source:

DCBS – Kentucky Department for Community Based Services: 32
NorthKey Community Care w/ DCBS: 1

Common Diagnosis of Children Served:

Attention Deficit Disorder
Attention Deficit Hyperactivity Disorder
Bi-Polar Disorder:
Depression
Mental Retardation (Mild, Moderate, or Severe)
Oppositional Defiant Disorder
Post Traumatic Stress Disorder
Reactive Attachment Disorder:
Tourette's Disorder

Program Highlights

This year we certified seven new foster families. One of our foster care workers received her Master's degree in Social Work.

Outcomes

- 100% of clients did not experience any further abuse or neglect since being placed in Holly Hill Foster Homes. (Goal was 94%)
- 84% of clients had a successful discharge. (Goal was 80%)

Adoption Services

Holly Hill Children's Services Adoption through Foster Care utilizes a team approach in offering children and families a diverse array of intensive services and supports with one unifying goal-to help achieve a safe, permanent home. The Adoption program offers an intensive level of services and supports designed to promote permanency, stabilize placements, and reduce length of time in out-of-home care.

The Adoption office is located at the Children's Home. Our adoptive families are located throughout the Northern Kentucky area. Services are provided primarily in the home.



Billy was removed from his biological family after several years of abuse and neglect.

Billy is developmentally delayed and mentally challenged. He is truly a special needs child.

It took a special woman to see the potential in Billy and assist him in developing to his fullest potential. He was placed in the home of a young single woman who does not have biological children of her own.

Billy has flourished in her care making major progress both behaviorally and academically.

Since then, Billy's adoptive mother has adopted one other child and plans to adopt again.

Billy is now a happy thriving little boy experiencing the love and support of a caring family.

Demographic Information

Age Range of Children Served:

Under 5: 2
5 - 9: 1
10 - 14: 2
15 - 19: 2

Number of Children Served: 7

Number of Families Served:

Number of Adoptive Families: 4
Number of Children Adopted: 7

Children Served by Gender:

Female: 3
Male: 4

Children Served by Race/Ethnic Composition:

White (non-Hispanic/Latino): 7

Children Served by Religious Affiliation:

Protestant: 7

Children Served by County:

Campbell: 5

Kenton: 2

Children Served by Placement Source:

Home of Natural Parent(s): 4
Hospitals: 1
Other Residential Program: 3

Children Served by Referral Source:

DCBS - Kentucky Department for Community Based Services: 7

Common Diagnosis of Children Served:

Attention Deficit Hyperactivity Disorder
Bi-Polar Disorder
Depression
Mental Retardation (Mild, Moderate, or Severe)
Oppositional Defiant Disorder
Post Traumatic Stress Disorder
Reactive Attachment Disorder

Program Highlights

This year we experienced the joy of seven adoptions in four different families. Two siblings groups were adopted in the four families. Three of the four families continue to act as foster parents with the hope of providing stability to more children in need.

Outcomes

- 100% of clients did not experience abuse or neglect since their adoption. (Goal was 100%)
- 100% reported satisfaction with their adoptive placement. (Goal was 80%)
- 100% of adopted clients remained in their adoptive placement by their 1-year post finalization. (Goal was 100%)

"The Family that perseveres in good works will surely have an abundance of blessings."

~ Chinese Proverb



Following the strong recommendation of her child's pediatrician, a single mother of four very young children called Holly Hill for assistance in managing her children's behaviors. She had been struggling unsuccessfully for almost two years to navigate the access and coordination of various services while trying to care for the four children.

Impact Plus eligibility was processed and approved for the oldest child, and a case manager was assigned.

The Case Manager brought together various service providers; including an in-home therapist, therapeutic child support worker, psychiatrist for medication management, and school staff to assist both the parent and the child to learn different techniques to effectively and consistently address behaviors in all areas.

In addition, alternate approaches to medications were successfully attempted, school and therapeutic summer programs were accessed, and the family secured appropriate housing to accommodate the large but young family.

Following approximately 12 months of service, the child was successfully discharged.

The Mother reported that while the children's behaviors had improved dramatically, she felt that she "personally made the most improvement by improving her self esteem, and confidence in her parenting skills, due to the help of so many people working together".

Case Management

IMPACT Plus is a behavioral health program for Medicaid-eligible children, ages 3-21, who have complex behavioral healthcare needs. The goal of IMPACT Plus is for parents and caregivers to be able to understand both their child's needs and the systems involved, so that they will be able to access and utilize them as their child's needs indicate, with parent involvement as the cornerstone of the program. The case manager's responsibility is to gather and relay this information to secure the funding needed to provide ongoing services, such as individual, family or group therapy, therapeutic mentoring, evaluations, after school and summer programs, as well as provide direct support to the parents and children served in the home, school and community.

Demographic Information

Age Range of Children Served:

Under 5: 16
5 - 9: 72
10 - 14: 69
15 - 19: 44
20 - 24: 1

Number of Children Served: 202

Number of Families Served:

Number of Foster Families: 32
Number of Adoptive Families: 4
Number of Children Adopted: 7

Number of Adults Served:

Number of Individual Parents Served: 247
Other Custodians: 52

Children Served by Gender:

Female: 57
Male: 145

Children Served by Race/Ethnic Composition:

Black, African-American: 20
White (non-Hispanic/Latino): 172
Bi-Racial: 10

Children Served by Religious Affiliation:

Catholic: 16
Muslim: 1
Protestant: 15
Baptist: 67
Other: 21
None: 42

Children Served by County:

Boone: 43
Campbell: 54
Gallatin: 1
Grant: 8

Kenton: 89

Pendleton: 7

Children Served by Placement Source:

Foster Home: 40
Home of Natural Parent(s): 148
Home of Relative(s): 12
Independent Living: 2

Children Served by Referral Source:

DCBS – Kentucky Department for Community Based Services: 45
Impact Plus via NorthKey Community Care: 5
Impact Plus via Other Regional and Local Hospitals: unknown

Common Diagnosis of Children Served:

Adjustment Disorder
Attention Deficit Disorder
Attention Deficit Hyperactivity Disorder
Autism Spectrum Diagnosis
Bi-Polar Disorder
Depression
Disruptive Disorder
Mental Retardation (Mild, Moderate, or Severe)
Oppositional Defiant Disorder
Personality Disorders
Post Traumatic Stress Disorder
Reactive Attachment Disorder
Tourette's Disorder:
Anxiety Disorder
Conduct Disorder
Obsessive Compulsive Disorder

Common Issues of Visitation per Child:

Abuse (witness / victim)
Domestic Violence: (witness / victim)
Drug/Substance Abuse: (witness)
Neglect: (victim)

Program Highlights

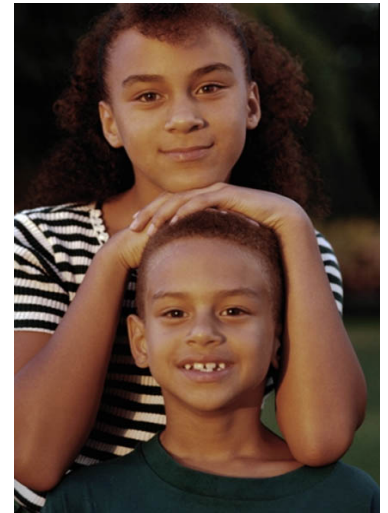
Case management service saw an increase in the *average* number of cases during this report period, with client base increasing from an average of **88 billable/90 open cases** in '05-'06, to an average of **108 billable / 110 open cases** monthly in '06-'07.

Outcomes

- 82% of clients that have received more than 30 days of Impact Plus services did not discharge to a higher level of care. (Goal was 85%)
- 87% decrease in overall hospital bed days upon discharge from Impact Plus through Holly Hill Children's Services. (Goal was 80%)
- 70% of clients will show improvement in targeted behaviors following participation in Impact plus services for not less than 180 days. (Goal was 70%)
- 99% of clients / families reported their experience with Holly Hill Children's Services was helpful in addressing needs of the client and family. (Goal was 95%)

Therapeutic Child Support

Holly Hill Children's Services Therapeutic Child Support Service is an Impact Plus (Medicaid) program, which serves children up to age 21 who are identified as "at risk" of being institutionalized due to emotional problems. This is a voluntary service, which is client-focused. Therapeutic Child Support Service works in conjunction with Case Management Services and the client's treatment team, which identifies the need for Therapeutic Child Support (TCS). The goal of TCS is to provide "one on one" therapeutic interactions with the client in the community and in their home to help stabilize their behavior while emphasizing personal growth and development. The TCS worker will work on identified goals and objectives outlined by a treatment team recognizing individual and family values and goals.



Alan and his siblings entered the Holly Hill Children's Services Impact Plus program over 3 years ago.

Since entering the program the children, including Alan, had a number of placement disruptions including a failed adoption. He has been in and out of foster care, hospitals, adoption and then back to foster care with fears, disappointments and behavioral outbursts.

Alan has maintained one therapeutic child support worker for close to 2 years of the time he has received Impact Plus services.

Because of the continuity of service Alan was able to have one consistent and supportive person who addressed his behaviors and the many disappointments/ disruptions he had undergone.

Recently Alan left our program and entered an adoptive home. He was able to manage this new adventure without regression into old out of control behaviors and be open to his new home. While sad to lose his worker who had been so supportive he has moved on in his life and to a more stable time.

Without Impact Plus and TCS services Alan may have continued to be a child of the "system" bouncing around from placement to placement.

Demographic Information

Age Range of Children Served:

Under 5: 4
5 - 9: 31
10 - 14: 14
15 - 19: 16

Number of Children Served: 65

Children Served by Gender:

Female: 21
Male: 44

Children Served by Race/Ethnic Composition:

Black, African-American: 7
White (non-Hispanic/Latino): 54
Bi-Racial: 4

Children Served by Religious Affiliation:

Catholic: 6
Protestant: 31
Non denominational: 4
Seventh Day Adventist: 1
None: 15
Episcopal: 2
Christian: 2
Church of Christ: 2
Jehovah Witness: 2

Children Served by County:

Boone: 14

Campbell: 18

Kenton: 32

Pendleton: 1

Children Served by Referral Source:

All TCS children were referred by Holly Hill Children's Services Impact Plus Case Management team. Holly Hill Children's Services is open to serving children who receive case management services from other Impact Plus providers but did not in the 2006 - 2007 period reviewed.

Common Diagnosis of Children Served:

Children served must have an AXIS I Diagnosis and a 6 month history of behavior problems that community services were unable to address successfully.

Adjustment Disorder
Attention Deficit Disorder
Attention Deficit Hyperactivity Disorder
Autism Spectrum Diagnosis:
Pervasive Developmental Disorder (PDD)
Bi-Polar Disorder
Depression
Disruptive Disorder
Oppositional Defiant Disorder
Post Traumatic Stress Disorder
Reactive Attachment Disorder
Tourette's Disorder

Program Highlights

Over 9,600 hours of service was provided and included a Halloween Party, Thanksgiving Dinner, Christmas Party, and Talent Show.

Outcomes

- 78% of clients served over 30 days experienced improvement or achievement in targeted behaviors and needs identified by the case management treatment team. (Goal was 90%)

Children improve on identified behaviors when receiving extended services, longer than 30 days, and when a therapeutic relationship is built where they have positive interactions with adults who are supportive, respectful and directed. Factors which negatively impacted a higher rate of success include the fact that some children included in this report received less than 30 days of services or did not utilize all hours allotted to them thereby not receiving full benefits, some children were too severe and needed longer more intense services, and some TCS workers left the agency leaving the child to be put back on the waiting list.



When Ralph inherited his son's estate, he put the money into a trust for each of his granddaughters, with the caveat that their biological Mother, Julie, was not to have access to the money. This angered Julie to the extent that she did not allow the grandfather to visit or spend time with his granddaughters.

Wanting to see his granddaughters, Ralph reviewed his rights and the court ordered supervised visitation through Holly Hill.

During the first visit, the girls were happy to see their grandfather, but were reserved.

Over the next few visits, the girls became very resistant and chose to play handheld video games rather than interact with their grandfather.

However, Ralph maintained regular visits with the girls and over time he was able to build a trusting relationship with them.

He now has unsupervised visits and open access to his granddaughters.



Supervised Visitation / Monitored Exchange

This program provides an opportunity for non-residential parents to maintain contact with their children in a safe and neutral setting. The program allows parents safe access to their children when unsupervised contact with the parent is not in the child's best interest. Holly Hill's Supervised Visitation and Monitored Exchange program helps families maintain stable and healthy relationships.

Demographic Information

Age Range of Children Served:

Under age 5: 24
5-9 yrs: 18
10-14 yrs: 20
15-19: 1

Number of Children Served: 63

Number of Families Served: 43

Number of Adults Served:

Parents Served: 74
Other Custodians: 12

Children Served by Gender:

Female: 37
Male: 26

Children Served by Ethnicity:

Bi-Racial: 1
Caucasian: 62

Children Served by County:

Boone: 3
Campbell: 37
Kenton: 16
Other: 7

Common Issues of Visitation per Child:

Abuse: 15
Domestic Violence: 35
Neglect: 13

Program Highlights

The number of clients served has increased over the prior fiscal year due to marketing efforts and the June 2007 closing of the Supervised Visitation program at the Family Nurturing Center. 1,292 hours of service were provided.

Outcomes

- 83% of returned exit surveys reported parents feeling safe. (Goal was 100%)
- 100% of children using S.V. services had an appropriate visit with parent without critical incident. (Goal was 100%)

Effective Co-Parenting Classes

A series of three support and education classes for parents who have experienced divorce or separation and are having problems co-parenting their children. Five series of classes were held during Fiscal Year 2007. Most of the parents who participate in these classes are court referred.

Demographic Information

Age Range of Adults Served:

15-19: 1
20-24: 2
25-34: 10
35-44: 9
45-54: 1

Number of Children Impacted: 59

Number of Adults Served: 23

Adults Served by Gender:

Female: 16
Male: 7

Adults Served by Ethnicity:

Caucasian: 23

Volunteer Contributions

Thank you to all of the volunteers who gave so generously of their time and talent to Holly Hill Children's Services. We are truly grateful.

GROUPS	NUMBER OF GROUPS	VOLUNTEERS	HOURS
INDIRECT	12	155	714
DIRECT	11	110	390.5
MENTORS (DIRECT)		9	1,087
INDIVIDUALS			
DIRECT		15	33.5
INDIRECT		109	529
TOTALS		398	2,754
BOARD OF DIRECTORS		22	824.0
TOTALS		420	3,578



Community Care Projects

Fiscal Year 2007

United Way Community Care is a unique opportunity for employees from area companies to match up with local nonprofit agencies through the United Way to undertake and complete much needed improvement projects.

Holly Hill is truly grateful to the companies and employees who so generously shared their time and energy, spending hours working to improve the look of the grounds and the environment in which we serve our clients.

Duke Energy

A team came out to the Children's Home and performed landscaping activities and planted flowers around the residential cottages and the Robinson administration building.

Ethicon Endo-Surgery

Employees donated and spread mulch, planted bulbs, and pulled weeds around the cottages. Another group came out and cleared the hillside and cleaned the gazebo.

Federated Department Stores

Employees washed all of the windows, inside and out, in the cottages and administration building.

Fund Evaluation Group

They generously donated personal items, paper products, and much needed school supplies.

Jessica Miller

Jessica Miller, an art teacher at Bishop Brossert High School, designed a mural that was painted with the help of students and residents at Hilltop Cottage.

IRS Cincinnati

Volunteer employees did Spring landscaping, planting, and spread mulch on the grounds of the main campus in California.

Union Central Life Insurance

Volunteers cleared the hillsides, inland and riverside, of dense overgrowth and weeds.

Group Projects Make A Real Difference

Sanitation District I

One group of employees trimmed the bushes and trees on the grounds of the Children's Home and poured a concrete slab outside the Family Connection Center.

Another team came out to the Children's Home and rebuilt the swing set and replaced the monkey bars outside of Riverview Cottage.

Volunteers Make a Difference

We believe that all individuals possess a unique level of expertise that can in some way help the children we serve. If you are looking for a place to give one of the most valuable gifts, the gift of your time, we could be the right agency for you. Holly Hill can find an individual or group activity suited to your interests and commitment.

Types of Services

Direct Service Activities

Client Mentors
Organizing Craft Activities
Playing Games
Corn Hole and Softball
Speakers Bureau
Hobby and Skill Demonstrations
Cooking Classes
Academic Tutoring
Singing
Parties
Tours of Area Attractions
Tours of Local Businesses
Hayrides
Painting a Wall Mural
Salon Visits

Total Hours: 1511

Indirect Service Activities

46th Annual Golf Classic
Kraut Route 2006
Board of Directors
Committee Service
Gift Wrapping
Landscaping
Planting Flowers
Mulching
Rebuilding the Swing Set
Clearing the Hillside
Washing Windows
Building a Gazebo
Serving Thanksgiving Dinner
Decorating for the Holidays

Total Hours: 2067

Donor Honor Roll

It is with sincere gratitude that we recognize the generous donors who made financial and in-kind contributions to Holly Hill Children's Services.

This Listing Reflects Gifts Received Between July 1, 2006 and June 30, 2007

Aces Computer
 Larry Adams
 Mary C. Adams
 Clarence Addison
 Airflow Equipment, Inc.
 Al Neyer, Inc.
 Alexandria Drugs
 Alexandria United Methodist
 Charles E. Allen
 Thomas M. Allen
 Jeff & Laura Allen
 Drs. Besse Lee & Richard Allnut
 American Legion Post #11
 Anonymous
 Wendy Arnold
 Stephen Arrowood
 Sandra & Jeff Ashba
 Richard & Cynthia Ashworth
 Aimee I. Atkins
 Janice Aust
 Ricky A. Austin
 Marie Babin
 Barry Baker
 Lynda A. Baker
 Kenzie Baker
 Jeffrey Bamforth
 Kathy J. Barrett
 Beverly L. Beane
 Lisa M. Beane
 Jeanette Elyse Beckham
 Bellevue Veterans Ladies Auxiliary
 Clarence & Luna Benedict
 Pamela Bennett
 Evette Bentley
 Mrs. Helen Berkmeier
 Donald Berkmeier
 Brenda Berry
 Bernard & Deanna Bilz
 Freida L. Blair
 Patricia Boden
 John Boekley
 Barbara Borden
 Michael Braun
 David & Betty Brefeld
 Lawrence & Karen Enzweiler Brennan
 Thomas Brinkman
 Joseph & Peggy Brockmeyer
 Dr. and Mrs. Richard Broeg
 Richard P. Broering, DMD, MS
 Diane M. Brossart
 Dale Brown
 Gerald Brown
 David Brown
 Patrick Bruener
 Michael & Patricia Brunst
 John R. Buchanan

Greg L. Buckler
 Elizabeth Bugie
 Shawn & Mina Busch
 Kevin A. Bush
 Robert M. Butler Foundation
 Lois Cahill
 David & Jill Caldwell
 John & Linda Carmack
 Daniel Lawrence Carmack
 Jeff & Renee Carnes
 Carthage United Methodist
 Lyn Caruso
 Sharon G. Carusone
 Michele L. Case
 Melissa Casto
 Sherry Leigh Castro
 Elizabeth A. Chapman
 Chemed Foundation
 Chi Alpha Circle
 M. Denise Chickey
 Cincinnati AAA Club
 Melissa S. Clark
 Thomas Code
 Cold Spring Electrical Contractors
 Comprehensive Women's Health Care
 Margy Vogel Coomer
 George & Judy Copenhaver
 Country Cruiser's Car Club
 Megan Countz
 Covington #985 Women of the Moose
 Keri Marie Cowan
 Louise Cox
 Laverne Creamer
 Holly K. Cronin
 Richard Crowder
 Nellie M. Cummins
 Raymond M. Dabbelt
 Charles T. Daniels
 J. Keith & Lisa Daniels
 Angela Darlington
 Rachel M. Davis
 Lisa Deaton
 W.C. & Jean Dicken
 Fred & Joann Dittrich
 Minda L. Doan
 Violet Doekel
 Ernest Dolle
 MaryClare Donaldson
 William & Mary Donnemeyer
 Betty Donoghue
 Dianne Dotson
 Laurie Dowell
 Robert W. Dreyer
 Duke Energy
 Paula Raye Dunaway
 Walter & Karen Dunlevy

Carol Dunn
 John T. Dunn
 R.C. Durr Foundation
 Jayne Lee Eaton
 Eckert Welding Company, Inc.
 Nancy K. Eddy
 Rajeania Egan
 Tamara L. Elkins
 Martha Ruth Elrod
 Enriching Spaces
 Ruth Enzweiler
 Jim & Kathy Epperson
 Andrew & Sandra Eskin
 Kathryn L. Eten
 Executive Charter, Inc.
 Chris T. Fahlbusch
 Don & Joann Fariello
 Janice K. Farrell
 Dolores Farris
 Michael & Rachel Farris
 Lou Fasce
 Federated Department Stores Foundation
 Joyce Feinauer
 Carmen Feltz
 Elisabeth Fennell
 Charlotte Fenton
 Rhonda J. Ferguson
 Carroll & Linda Ferrel
 Deborah L. Fieger
 Jeffrey Fields
 Joseph & Lisa Finan
 Michael P. Finn
 First Christian Church
 First Christian Church Women's Group
 Arthur Fischer
 Deborah Fischer
 Connie Fisher
 Mr. & Mrs. Frank Fisher
 Susan & Mike Fitzgerald
 Flagg Springs Baptist Church, Inc.
 Joe Flege
 Mr. & Mrs. James Flynn
 Patti C. Flynn
 Sharon & David Forton
 Philip & Carol Foster
 Donald & Nancy Francis
 Roger & Virginia Francis
 Matt & Shirley Franck
 Paul Franxman
 Joyce Frede
 Denise Fritsch
 Marion Andy Futscher
 Melinda Gaylor-Martino
 G.E. Foundation
 Gary John Gearding
 Donald Gerhardstein

Earl Gettelfinger
 Don & Lisa Gibson
 Gerald L. Glancy, Jr.
 Dennis P. Glenn
 J.V. Goebel
 Mark & Melody Gold
 Fred & Bev Goodman
 James D. Graves
 Greater Cincinnati Foundation
 Jack Greer
 Roseann Gregory
 Sarah Beth Gross
 Jonathon J. Grote
 Leonard E. Grothaus, Jr.
 Steven Grothaus
 Valerie Guthrie
 James R. Haas
 Geneva F. Habermehl
 Mr. & Mrs. Carl Hager
 Robert Hall
 Cathy I. Halloran
 James Hamberg
 Vincent & Gertrude Hambrick
 Ricky Hammons
 Howard & Ruth Hanson
 Glen & Connie Hanson
 Alice Harrington
 Brandon M. Hart
 Jerry & Cynthia Hebel
 Judge Lambert Hehl
 Bernice Heinze
 Karen S. Henderson
 Larry A. Henderson
 Anna Mary Hensley
 Rodney & Christie Henson
 Ian H. Hershey
 Susan Hertenberg
 Ruth Hervey
 Bill Hesler
 Steven & Carol Hinkel
 Richard Hinkle
 Regina Hirsch
 Sherry R. Hitch-Thomas
 Judy Hogle
 Nancy Huebener
 Michael J. Huesman
 Joann Huheey
 Mrs. Martha Hunter
 Edward L. Hutton Foundation
 Mr. & Mrs. Sam Ionna
 Stacey Ison
 Joe Ison
 Karen Issler
 Joe & Angela Ivey
 Ryan Jacob
 William Charles Jacob

Kyong I. Jang
 Angela Jeffries
 Joseph & Ruth Jennings
 Gerald & Janet Jones
 Amanda L. Jones
 Martin C. Joseph
 Eileen Jung
 Henry P. Justin
 Thomas Kappes
 Andrea K. Keating
 Jennifer J. Kelhoffer
 Donna L. Kendrick
 Kentucky Motorcycle Riders Organization
 Wendell B. Kidd
 Jennifer C. Kidd
 James King
 Alice Kinman
 Edith Kirchoff
 Betty Klein
 John Klette
 John & Kimberly Klotz
 Jennifer Koster
 Michael J. Kremer
 Ralph W. Kroger
 Paula Tretter Kuehne
 Sandra Kuhn
 Lupita M. Laber
 Ladies Night Out
 Timothy & Patty Lally
 Greg & Mary Land
 Mark Landrum
 Mike & Sandy Laney
 Walter A. Larosa
 LECCO Company
 Carolyn Leicht
 Len Riegler Blacktop Co., Inc.
 Neil & Pearl Leonard
 Robert & Judith Licht
 Michelle Litmer
 Michele Little
 Joseph Lloyd
 Local Union 647, UAW
 Tamra A. Long
 Todd W. Lubbe
 Lucas Sanitation
 Mr. & Mrs. Paul Luersen
 Karen Luke
 Barbara J. Lukens
 Luke & Ann Lukens
 Natalia Lumpkin
 Aaron D. Lusby
 Andrew Lutes
 Nick & Melissa Lutz
 Douglas & Jane Lyons
 Lisa Maines
 Jeanine Margolen
 Joseph Martin
 Gail T. Mason
 Thomas & Florence McCaffrey
 Mary McCormick
 Michael McGraw
 Michael McGum
 James P. McLaren
 Daniel McNeill
 Linda Ann Megerle
 Jack & Brenda Mehalko

Gregory Menetrey
 Pamela Merritt
 Martin & Cathy Meyer
 Mary Meyer
 Patricia Might
 Erin L. Miller
 Diane Miller
 Miller-Valentine-Walsh Fund
 William & Donna Milligan
 Beverly Mitchell
 Lori Mitchell
 Gary & Beverly Mitchell
 Mitsubishi Electric Automotive America, Inc.
 Ruth Moeller
 Betty Ann Mohr
 Rick Montgomery
 Lisa M. Moore
 Eileen Moore
 Kathryn Morford
 Ronald L. Morrison
 Leon Mueller
 Michael W. Mullen
 Ishmael Mullins
 Mr. Todd Murphy
 Nancy J. Murphy
 Ronald & Charleen Murphy
 Tony Gordon Nash
 Jesse D. Neack
 Kathleen Neltner
 Newport Elks
 Newport Steel Corporation
 Judy A. Niehaus
 Darlene Nieman
 Mark D. Noble
 Thomas J. Noble
 Ronald & Sherrie Lou Noel
 Oakland United Methodist
 Elizabeth Oaks
 Mary L. O'Brien
 Optimist Club of Ft. Thomas
 Thelma D. Parker
 Mr. & Mrs. Kenneth Paul
 Therese M. Paul
 Sima & Barbara Paunesku
 Greg Pearson
 Brenda Pelfrey
 Garrett Perkins
 Joyce Pfefferman
 Todd & Janet Pfeiffer
 Pam & Bill Phillips
 Joe Pigg
 Shirley Plummer
 Daniel & Valerie Poos
 Ray A. Porter
 Charles Powers
 Cynthia Powers
 Donald & Violet Prigge
 Prime Time Singles of Immanuel
 Tina Pruitt
 William & Carol Purser
 William & Susan Rachford
 RadioShack Corporation
 Tom Ratliff
 Brenda Ratliff
 Randy & Linda Rawe
 Renee Ray

Norma Rebholz
 Rechtin Heating & Air Conditioning
 Mr. & Mrs. Donald & Norma Rehg
 Marilyn Reibold
 Harold & Ruth Reifschneider
 Janet Reis
 Alexandria J. Rekers
 Joe & Cindy Revell
 Rhineland Foundation
 Alfred Ricell
 Cindy Richmond
 Howard Richter
 Ken & Audrey Riffle
 Carolyn Rigg
 Dottie Riley
 Yvonne Riley
 Lisa Rittinger
 Mr. & Mrs. Kurt Rizzo
 Celestina Robb
 Tom Roksvag
 Sheila R. Romans
 Lynda K. Romes
 Brian Rose
 Thomas I. Ross
 April Rothan
 Jim & Sally Rowe
 Donna Ruef
 Sharon A. Runge
 John D. Russell
 Ruth B. Saccone
 Theresia Sacksteder
 Mark Sager
 John Sandfoss
 Richard & Aleene Schaber
 James Schadler
 Jeanette & Viginia Schatz
 Connie Schlaman
 Judge W. L. Schmaedecke
 Gerald E. Schmidt
 Nancy J. Schmidt
 Earl & Debbie Schmidt
 Michael & Jacquelyn Setele
 Harold & Clelia Simpson
 Marie Slezak
 Gerri D. Slusher
 Diane L. Smiley
 Daniel G. Smith
 Tina F. Smith
 William & Martha Snider
 William & Sylvia Spegal
 Lisa Speier
 Russell Sprong
 St. Andrew's Episcopal Church
 St. Paul's United Church of Christ
 Marilyn K. Steever
 William J. Steffen
 John Jay Stein
 Randall Steinhauer
 Sunshine Cleaners
 Mitchell Eric Talbott
 Brandon S. Terrell
 Neil & Clara Thompson
 Harry & Ruth Thorn
 George A. Thurza
 Dawn Tillie
 Ruth L. Tinch

Concella E. Tisa
 Toyota Motor Manufacturing
 David & Mary Jane Trauth
 David Trimbur
 Robert J. Trimpe
 Triton Services, Inc.
 Roy Truitt
 Alan Trutschel
 Theron & Joyce Tucker
 Pamela Turner
 Union Central Life Insurance
 United Methodist Women
 Jennifer Valdez
 Cliff & Lona Valentine
 Debbie Vance
 Dennis W. Vann
 Janet VanNevel
 Mary A. Velten
 Lori & Jean Venters
 William & Pamela Voelker
 Katherine Vogt
 VonLehman & Company CPA's
 Mr. & Mrs. Roger VonStrohe
 Donald E. Vrobel
 Diane Wade
 Janine Wadsworth
 Glenn & Margie Wagenlander
 Michael S. Wagner
 Wal-Mart
 John & Janice Weber
 Lisa Webster
 Paula Webster
 Rebecca L. Webster
 Robert & Virginia Welkamp
 Joshua M. Weitzman
 Erika Wells
 Mr. & Mrs. Chris Wells
 John & Sherri Wenderfer
 Penny Wheatley
 Robert & Anne White
 Garrett D. White
 Loy White
 Cheryl Wilder
 Jo Wilder
 Amy E. Wilkins
 Sara S. Williams
 Glen Douglas Wilson
 Robert & Beverly Wilson
 Sally Wilson
 Patricia Wilson
 Michael & Deborah Wilson
 Tom & Pat Wingo
 C. William Witte
 Robert & Nancy Witte
 Edwin Woeste
 Connie Wong
 Leah Mallory Wood
 Kathy Wooton
 Paula Zechella

In Honor

Joe & Debbie Brooks
Aces Computers
 R.C. Durr
M. Denise Chickey

Dolores Farris

Pam & William Phillips

Roger Francis

Don & Mary Francis

Jesus' Birth

Earl & Debbie Schmidt

Betty Lou & Herman Pfeiffer

Todd Pfeiffer

Those Who Help Needy Children

William & Mary Donnermeyer

In Memory

John & Lillian Baker

Barry Baker

Kimberly Bennett

Pamela Bennett

Catherine Berkemeyer

Donald Berkemeyer

William Brauley

Richard Broereng, DMD/MS, PSC

Robert Burnette

Betty & David Brefeld

Clif & Lona Valentine

Jean & Lon Venters

Jack Busum

Martha Hunter

Patricia Smith Cade

Alice Harrington

Randy Cooper

Pamela Merritt

Cox Family

Louise Cox

Lois Creekmore

Martha Hunter

Martha Demmerle

Martha H. Hunter

Robert Doekel, Sr.

Violet Doekel

Fred Donsback, Jr.

Anonymous

Deco Farris

Dolores Farris

Pam & William Phillips

George & Phoebe Fischer

Arthur Fischer

Bev Fowel

J. Keith & Lisa Daniels

Sr. Marie Gangwish

Marie Slezak

Anna, Charles, & James Gettelfinger

Earl Gettelfinger

Celeste Goebel

J. V. & Mary Goebel

Dorothy Groesch

Edwin Woeste

Wilma Gugel

Barbara Borden

Andrew & Sandra Eskin

Elizabeth Fennell

Daniel Smith

Mother & Father

Carl Hagee

Helen Hehl

Lambert Hehl

J. Marshall Huheey

Joann Huheey

Elmer & Nelly King

James King

Lillian Schaber Kirkland

Mr. & Mrs. Richard Schaber

Harry L. Lukens

Luke & Ann Lukens

Jenny McCracken

Eileen Jung

Donald Morford

Kathryn Morford

William Pelfrey

Brenda Pelfrey

Genie Rabanus

Virginia & Jeanette Schatz

Arthur Rebholz

Norma Rebholz

Gabe Rice

Marty Hunter

Fran & Joe

Kenneth & Audrey Riffe

Robert Simpson

Martha Hunter

Peter & Irene Smith

Alice Harrington

Landen Spence

Geneva Habermehl

William Stilz

Tom & Pat Wingo

Linda Broeg Szabody

Dr. Richard & Mary Broeg

Jasmine Marie Turner

Barbara & Sima Paunesku

Unborn Children

Edwin Woeste

Jean Banks Wilson

Don & Joanne Fariello

In-Kind Donations

A.J. Jolly Golf Course

Alexandria Garden Center

Alexandria Tire Center

American Legion Latonia

Ameristop

AT&T

Avon

Mike Bauer

Annette Beck

Bishop Brossert High School

Bluegrass Quality Meats

Reverend Caroline Brown

Cardinal Engineering

CarX Auto Service

Catholic Health Initiatives

Champlin Haupt Architects

Denise Chickey

Citiigroup

Club Tan

Comair

Continental Cleaners

Country Cruisers

The Country Heart

County Market

Covington Catholic High School

Crawford Insurance

Angela Crawford

Curves

Dairy Queen

Lisa & Howard Dickson

Divisions, Inc.

Domino's Pizza

Duck Manor Promotions

Walt Dunlevy

Dusing Brothers Ice

Edy's Grand Ice Cream

Ellenbee Leggett

Sue Emminger

Empress Chili

Fabritec International

Farris Family

Fifth Third Bank

Connie Fisher

Florence United Methodist Church

Four Seasons Boutique

Gold Star Chili

Gold's Gym Alexandria

Great Escape Cinema

Suzanne LeMere Guerin

Dee Hartman

Helping Greater Cincinnati Achieve

Rodney Henson

Herzog Jewelers

Home Depot

Immaculate Heart of Mary School

Ed & April Johnson

Kentucky Motor Service North

Herb Kirchoff

Kreutzer & Dorl Florist

LaRosa's Pizzeria

Chris Laskey & Family

Lori Leach

LEGACY

Longhorn Steakhouse

Lyons Family

Marsh Builders

McHale's Hospitality Group

Rita Meadors-Koons

Meters & Miles

Jeannie Meyer

Monmouth Jewelers

Montgomery Inn

Movie Gallery

National Exemplar Restaurant

Newport Aquarium

Newport on the Levee

Al Neyer, Inc.

NKY Bursar's Office

O'Charley's

Ohio National

Overlook Landscape & Nursery

P&G Global Treasury

PartyTown Florence

Bonnie Pickett

PNC Bank

Proctor & Gamble

Protective Life Insurance Company

Quick Stop Oil Lube

Rafferty's

Randy's Express Catering

Captain Greg Reese

Rebecca Kirchoff Reese

Mike & Margie Robbins

John Russell

SADD of Beechwood High School

Salon 602

Salvation Army

Elizabeth Sandlin

ShadowBox Cabaret

Showtime Video

Smith & Jolly Garden Center

Southern States

Square D

St. Elizabeth Medical Center

St. Pius X Church

Staples

Starbucks Florence

Stegman Kitchens

Straus & Troy

Subway

Fluorescence Cleaners

Supercuts #9100

Susan's Salon

Swan's Florist

Tastefully Simple

Chip Terry

The Real Me Photography

Thomas More College

TJ Maxx

Town & Country Sports Complex

Trauth Dairy

UK Cooperative Extension Service

UPS

Janet VanNevel

Justin Verst

Victor Brown & Sons Florists

Deanna & John Vosmeier

Wal-Mart

Weltman, Winberg & Reis

John & Sherri Wenderfer

Wilder Signs, LLC

Jo Wilder

Nancy Wolfe

Connie Wong

Zimmer Chrysler Jeep

Grants

AAA Allied Group

Robert M. Butler Foundation

R.C. Durr Foundation

Fifth Third Bank

Fiscal Courts of Boone, Campbell

& Kenton Counties

The Greater Cincinnati Foundation

Hoefinghoff Family Fund

Edward L. Hutton Foundation

Insuring the Children

Kentucky Motorcycle Riders Organization

Miller Valentine Walsh Fund

Mitsubishi Electric Automotive America

RadioShack

Square D Foundation

Toyota Manufacturing North America

United Way

Wal-Mart

46th Annual Golf Classic

May 16, 2007
A.J. Jolly Golf Course



The 46th Annual Holly Hill Golf Classic was a complete success raising over \$26,000 for Holly Hill Children's Services. More than 150 golfers enjoyed the day.

A Special Thank You to Our Signature Sponsors

Citizen's Bank of Northern Kentucky
Crawford Insurance
Deloitte Tax, LLC
R.C. Durr Foundation
Fifth Third Bank
Lakeside Christian Church
Morgan Stanley



Best Male Foursome

Mickey Foellger
Marc Ogle
Keith Johnson
Paul Hill



Jeff Wyler Alexandria

Sponsor
Hole-in-One Contest



Best Female Foursome

Cynthia Goforth
Chris McIntosh
Charla Meyer
Patty Caldwell

46th Annual Golf Classic Tee Sponsors

Adams, Stepler, Wolterman, & Dusing
The Bank of Kentucky
Barrett Paving
Brecek & Young Advisors, Inc.
Broadbank Broadcasting Corp.
Bluegrass Paving
Builder's First Source
Cardinal Engineering
Champlin/Haupt Architects, Inc.
Diversity
Duck Manor Promotions
E.C. Schmidt Plumbing Contractor, Inc.
EGC Construction
Ethicon Endo-Surgery
First Security Trust Bank
Fischer Attached Homes II, LLC
Flottman Company, Inc.
Roger and Virginia Francis
Frank's Portables
Funch Lumber
Hatfield Insurance Agency
I.B. Goodman Mfg. Co., Inc.
Johnson Investment Counsel
J.P.S. Construction
Kreutzer & Dori Florist
Lally Pipe & Tube
Law Office of Sheryl Egli Heeter
Law Office of Jan Kreutzer
Lucas Sanitation Company
Main Street Baptist Church
Myles & Myles Retirement Planners
Northern Kentucky Business Referral Group
NorthKey Community Care
OneAmerica
Pendery Insurance and Risk Management
PNC Bank
Bart Porter, P.S.C.
Progressive Rehab
Tom Rehtin Heating and Air
ResComm Security
Schneider Electric/Square D
Sherrill D. Morgan & Associates, Inc.
Silver Grove Motors, Inc.
South I-75 Chrysler Dodge Jeep
Peggy L. Stephens
Louis Trauth Dairy, LLC
VonLehman & Company, Inc.
Waite, Schneider, Bayless & Chesley
Tom & Pat Wingo

Kraut Route 2006

The 10K run/5K walk, held October 15, 2006, was generously sponsored by Meters & Miles run & walk shop in Newport for the benefit of Holly Hill. Nearly 150 participants and 23 individual and corporate sponsors participated in the event with proceeds of over \$7,600 to directly benefit Holly Hill.

A Special Thank You to Our Signature Sponsors

The Bank of Kentucky
Broadbank Broadcasting Corp.
Citizen's Bank of Northern Kentucky
Denier Electric Co., Inc.
Divisions, Inc.
R. C. Durr Foundation
Ethicon Endo-Surgery, Inc.
Phil and Carol Foster
Mimi and Bill Hagedorn
Hofbrauhaus
Jarvis Mechanical Constructors, Inc.
Law Office of Jan Kreutzer
M & M Service, Inc.

Maple Street Homes
Meters & Miles
Myles & Myles Retirement Planners
Al Neyer, Inc.
Northern Kentucky Water District
Jim and Bonnie Pickett
PNC Bank
Progressive Rehab
Silver Grove Motors, Inc.
St. Elizabeth Medical Center
VonLehman & Company, Inc.
Tom and Pat Wingo



Ken Shields
Legendary NKU Basketball Coach
Tapping the Keg at Hofbrauhaus Newport
Kick off to Kraut Route 2006.

Opportunities to Give Healing, Help & Hope

*"Do all the good
you can, by all
the means you
can, in all the
ways you can, to
all the people you
can, as long as
ever you can."*

-John Wesley

Charitable gifts to Holly Hill provide support for the agency to fulfill its mission and help donors with important financial benefits and tax savings. There are numerous meaningful opportunities for you to offer healing, help and hope to the children we serve. Please consider the following:

Bequests

Remember us in your will. Through estate planning provisions, you can leave a lasting legacy to support Holly Hill and the work it does.

The following basic bequest language is suggested: "I give, devise, and bequeath to Holly Hill Children's Home in California, KY [insert written amount, percentage of your estate, description of property, etc.] to

be used for its general purposes and benefit."

Direct Mail Appeals

These personal requests mailed several times a year provide a convenient method for you to mail in a cash or check contribution to provide annual support for Holly Hill.

Gifts-in-Kind

Holly Hill is often in need of in-kind donations such as school and craft supplies, personal care products, clothing and sports equipment. Please contact us to discuss current needs.

Memorials and Tributes

Donations may be made in memory of a loved one or to commemorate a special occasion. This is a wonderful way to recognize someone special who has touched

your life in a meaningful way.

Planned Gifts

There are various planned giving options available, offering opportunities for commitments that will have a major impact on Holly Hill while offering numerous benefits for the donor. Examples include gifts of real property, life insurance, retirement plan, annuities, or trusts. Consult your attorney, accountant, or financial planner to discuss the best options for you.

Special Events

Special events are held to raise awareness in the community about Holly Hill and raise funds for its support. The annual Golf Classic is held each year in May and the Kraut Route Run/Walk is held in October.



Holly Hill Children's Home

9599 Summer Hill Road
California, KY 410017
859-635-0500
859-635-0504
info@hollyhill-ky.org

Family Connection Center

1400 Gloria Terrell Drive, Suite H
Wilder, KY 41076
859-442-8500
859-442-8555
info@hollyhill-fcc.org

Visit us on the Web at:
www.hollyhill-ky.org

Non-Profit Organization

U.S. POSTAGE

PAID

Alexandria, KY

Permit No. 26